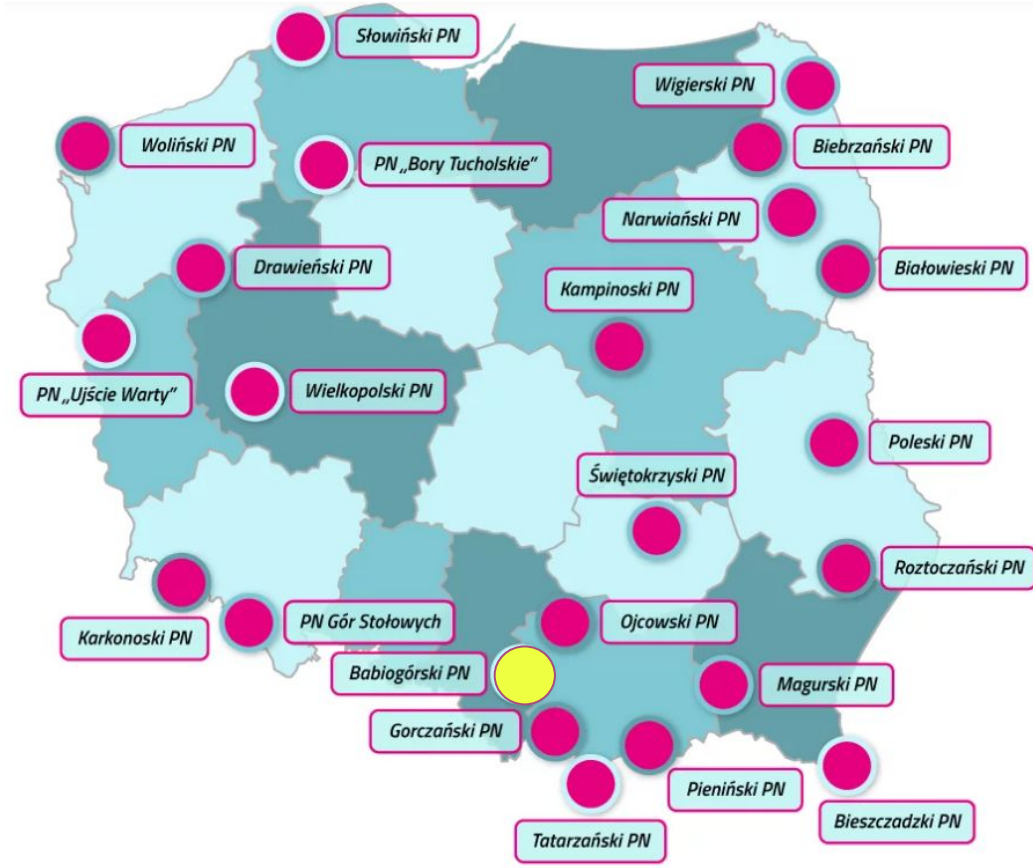


National Parks in Poland

A scenic landscape photograph of a river flowing through a forested valley. The river is in the foreground, winding through the scene. The banks are lined with dense forests, many of which are in autumn, showing vibrant yellow and orange foliage. In the background, there are steep, rocky mountains covered in more forest, some with patches of bare rock. The sky is overcast. The text 'National Parks in Poland' is overlaid in white, sans-serif font across the middle of the image.

BABIOGÓRSKI NATIONAL PARK

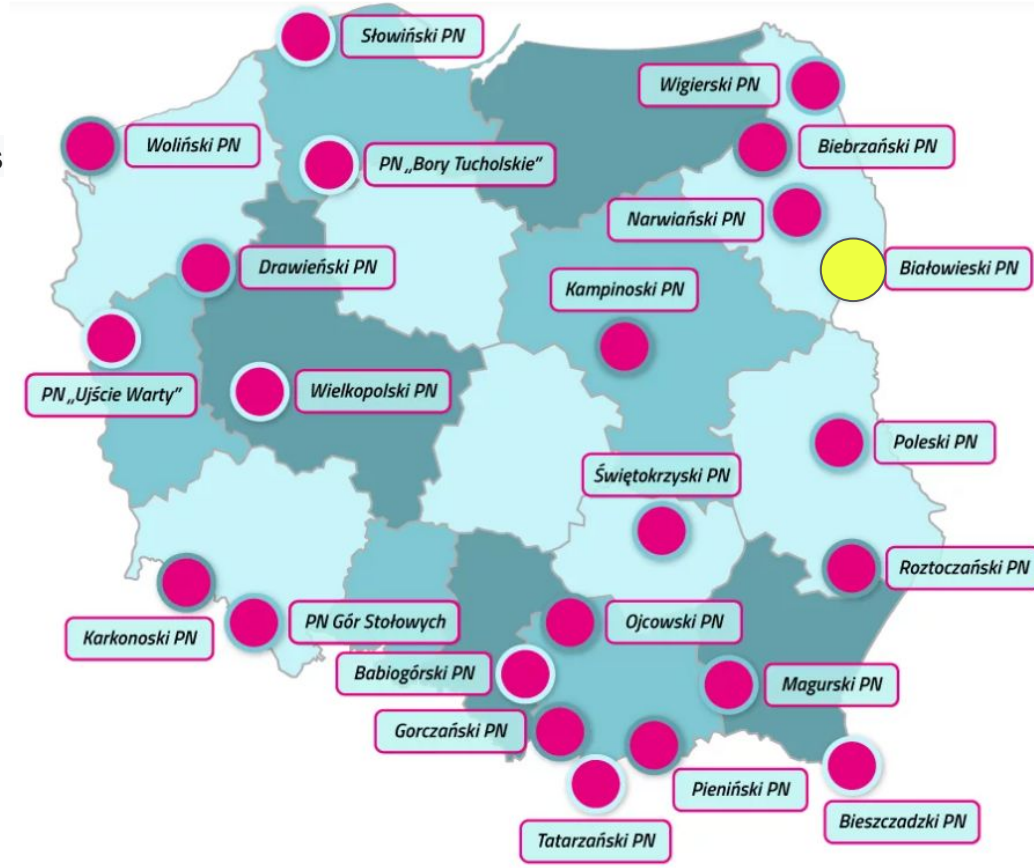
1. Babiogórski National Park is located in the southern part of the country, in the Lesser Poland Voivodeship, on the border with Slovakia.
2. The name "Babia Góra" has its legends. One of them says that it is a pile of stones dumped in front of the cottage by a giant woman
3. this park is famous mainly for its preserved old forests





BIAŁOWIESKI NATIONAL PARK

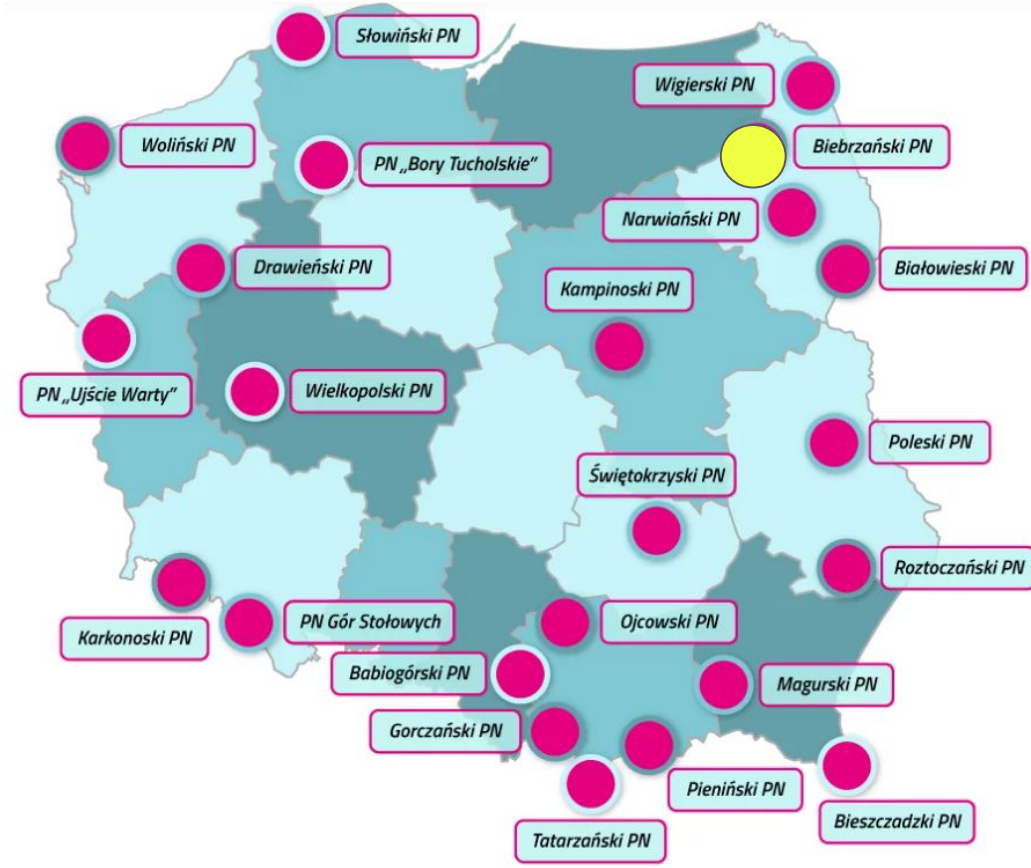
1. Białowieski National Park is located in the Podlaskie Voivodeship, in the north-eastern part of Poland, near the border with Belarus (the border runs through a forest).
2. The Białowieski National Park covers and protects the best-preserved part of the Białowieża Forest, which is the last fragment of primeval forest in Europe and the largest free-ranging bison population in the world.





BIEBRZAŃSKI NATIONAL PARK

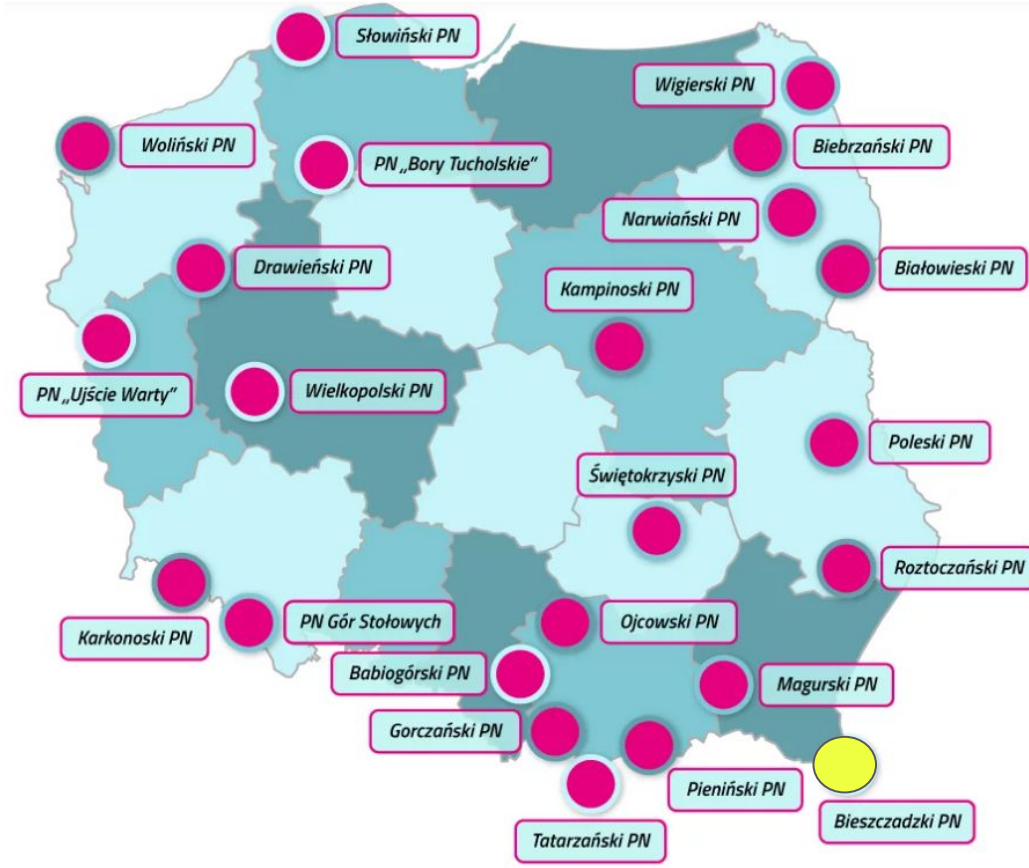
1. The Biebrza National Park (BbPN) is located in the Podlaskie Voivodeship, in the Biebrza Valley
2. The symbol of the park is the ruff (*Calidris pugnax*) - a species of medium-sized migratory bird from the snipe family.
3. Relict species found in the park include: Lapland willow, common ivy, blue sagebrush, king's nit, and common swamp.





BIESZCZADZKI NATIONAL PARK

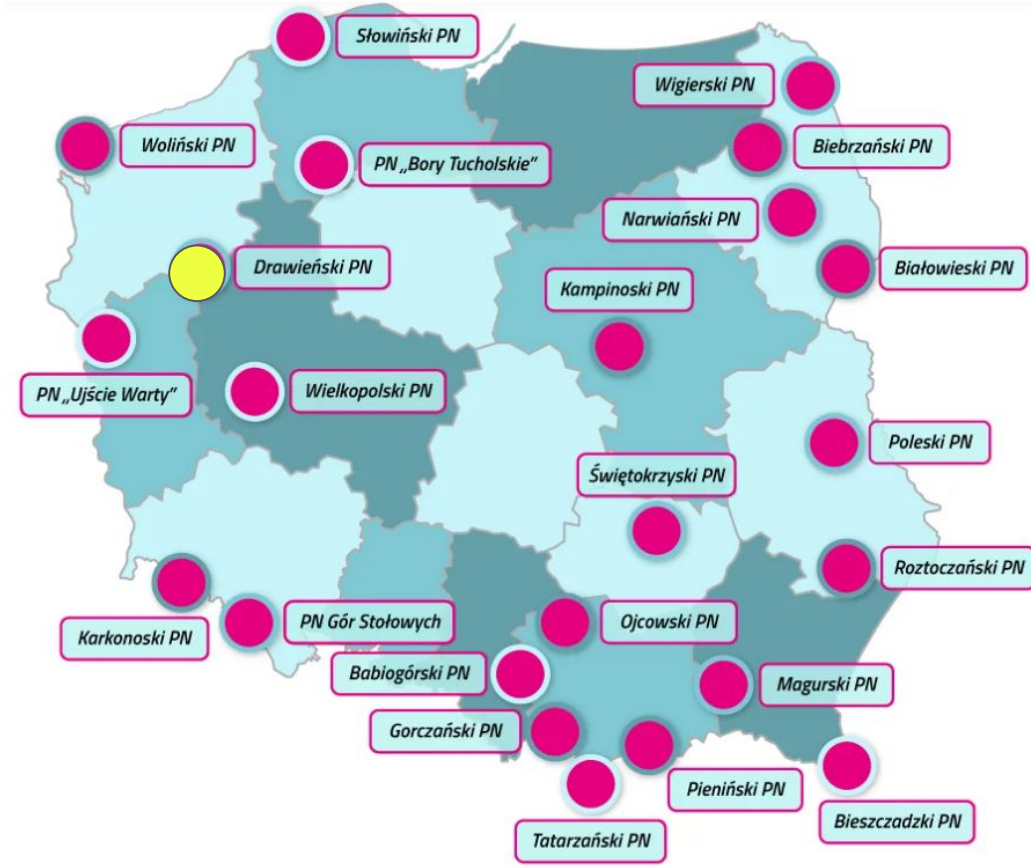
1. It is the third largest, after the Biebrza National Park and the Kampinos National Park. It is also the largest national park in the Polish mountains.
2. The symbol of the park and its coat of arms is the lynx - the largest European cat.
3. The Bieszczady National Park protects the highest parts of the Polish part of the Eastern Carpathians.





DRAWIEŃSKI NATIONAL PARK

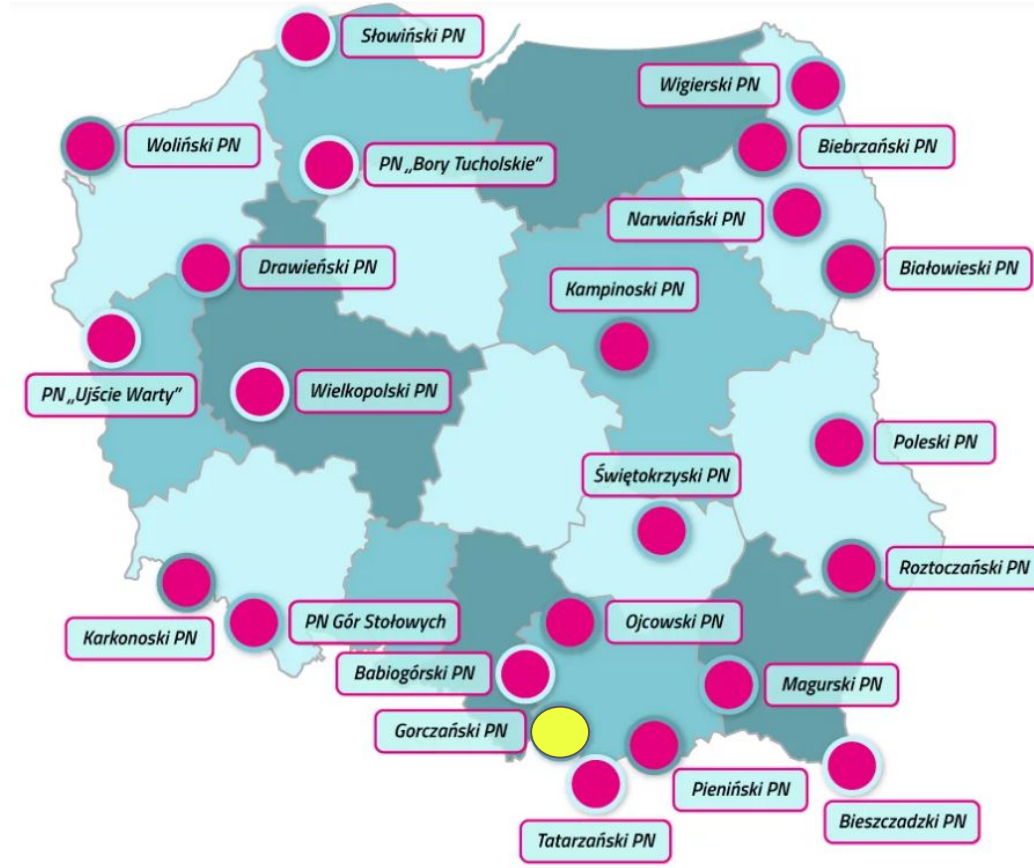
1. It is a national park of three voivodeships
2. More than 80% of the Park's area is covered by forests - the Drawska Forest stretching from the Drawskie Lake District to the Noteć River.
3. The main attraction of the Park's landscape are the beds of the Drawa and Płociczna rivers, deeply cut into the ground, as well as glacial channels with picturesque lakes.

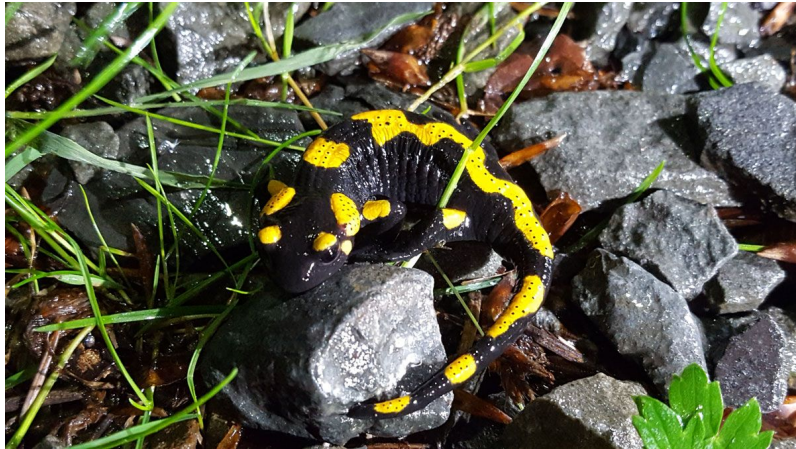




GORCZAŃSKI NATIONAL PARK

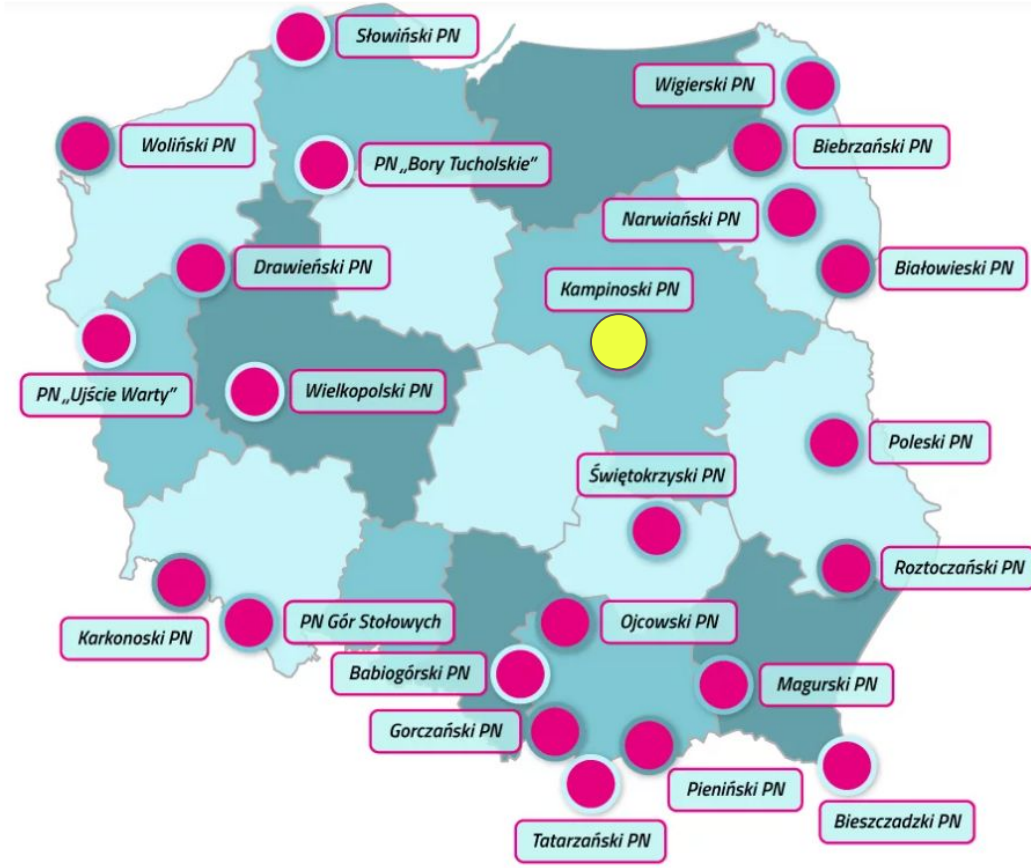
1. The symbol of the park is the fire salamander, the largest tailed amphibian living in Poland.
2. There is a well-developed network of springs and watercourses in the Gorce Mountains.
3. The GPN distinguishes three categories of protection: strict, active and landscape.





KAMPINOWSKI NATIONAL PARK

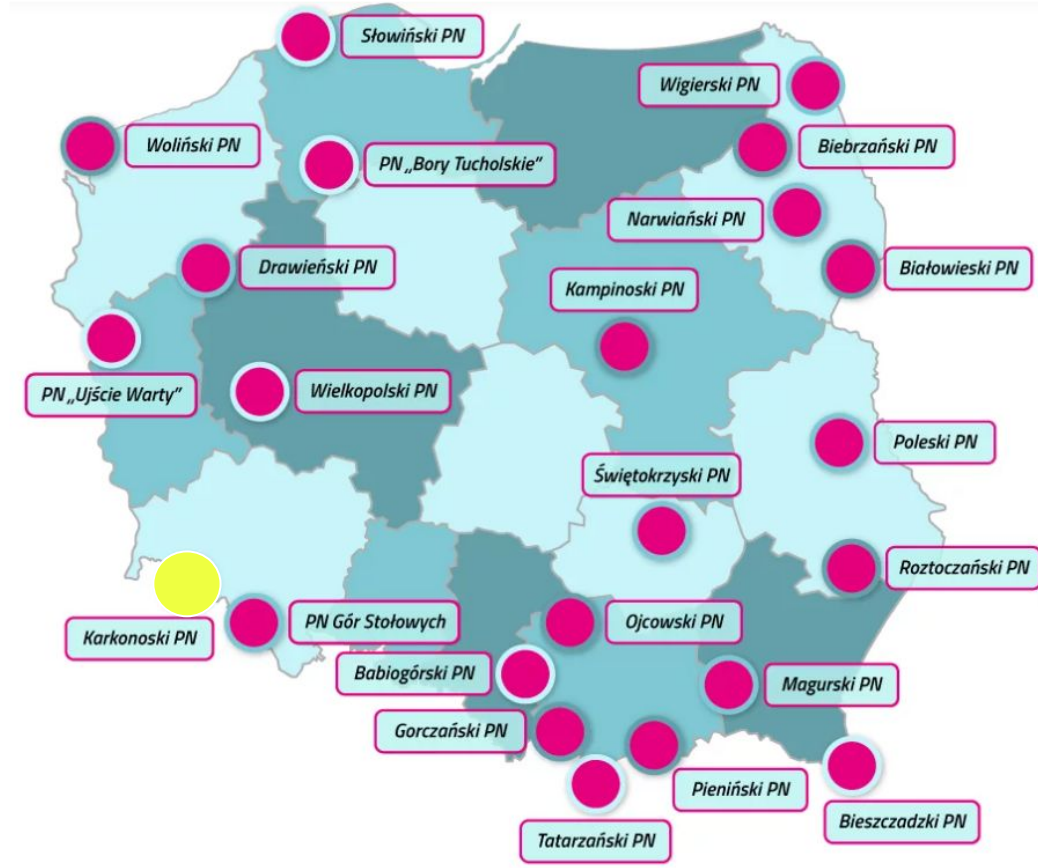
1. The symbol of the Kampinos National Park is the moose, the largest of the fifty species of mammals found there.
2. It is the sister park of Indiana Dunes National Park in the United States.
3. In the past, the Kampinos Forest was a hunting ground for moose, deer and wild boars.

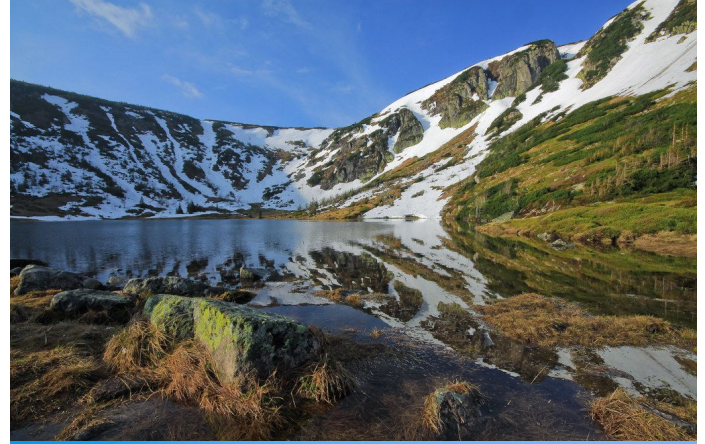




KARKONOSKI NATIONAL PARK

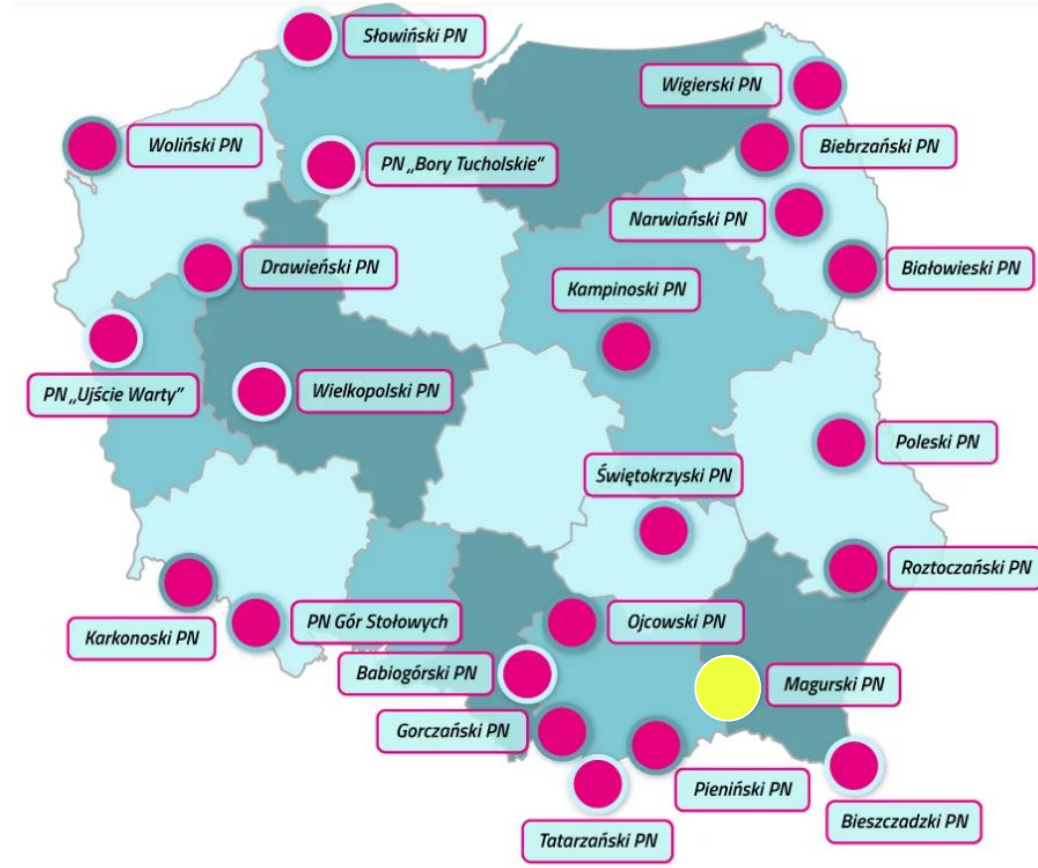
1. It also covers that part of the Karkonosze Mountains that belongs to our southern neighbor - the Czech Republic. Both parks cooperate with each other and even have a common logo, which is unique among European national parks.
2. The highest peak of the Karkonosze Mountains is Śnieżka, with an official height of 1,602 m above sea level.





MAGURSKI NATIONAL PARK

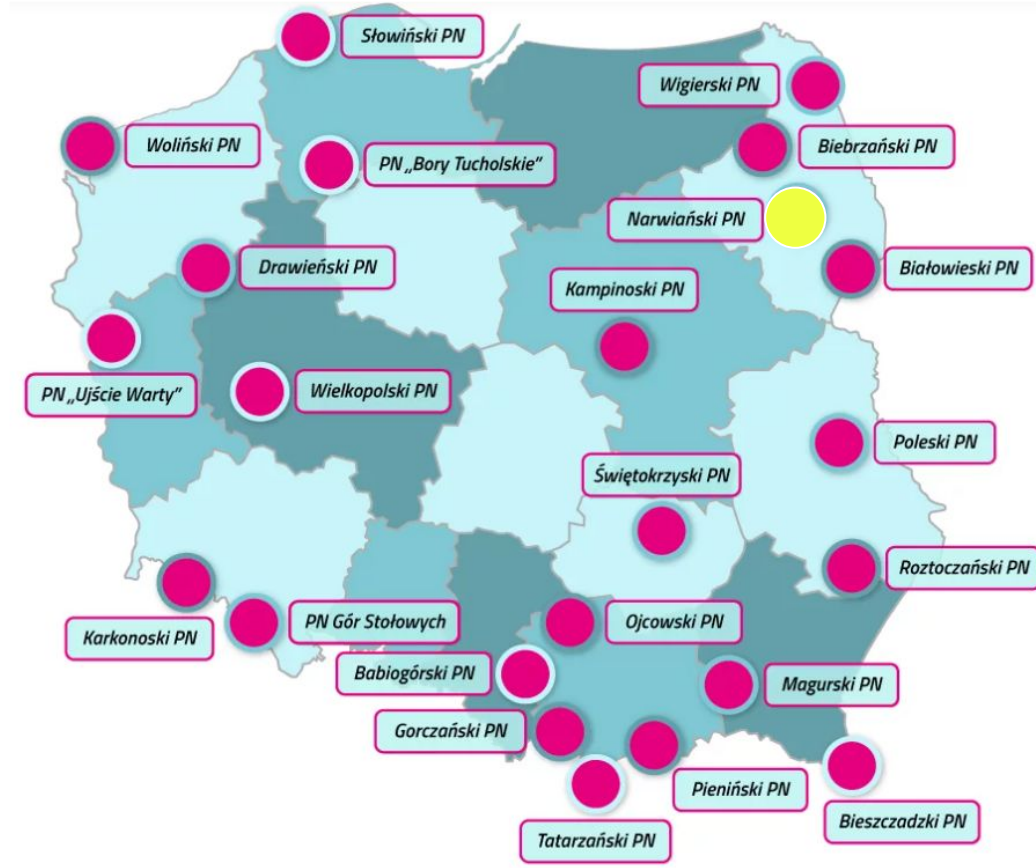
1. Among the mammals that can be seen during a visit to the area are the brown bear, moose, lynx, wildcat, raccoon dog and wolf.
2. In addition to numerous hiking trails, the Magurski National Park also offers excellent areas for cycling and horse riding enthusiasts.





NARWIAŃSKI NATIONAL PARK

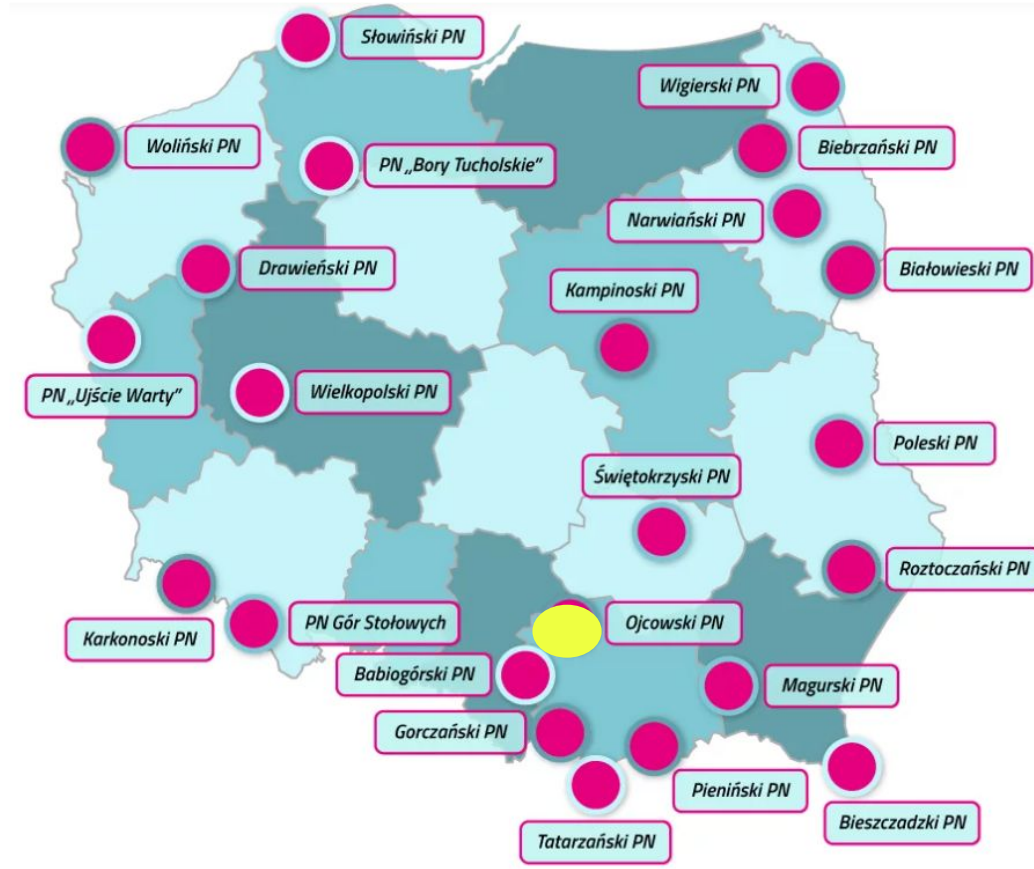
1. There are as many as 7 observation towers in the Narew National Park. The tallest of them is the tower in Kruszewo
2. There are lessons in biology, ethnography, physics and history, as well as interesting field games that show the youngest the beauty of the park in an active and interesting way.





OJCOWSKI NATIONAL PARK

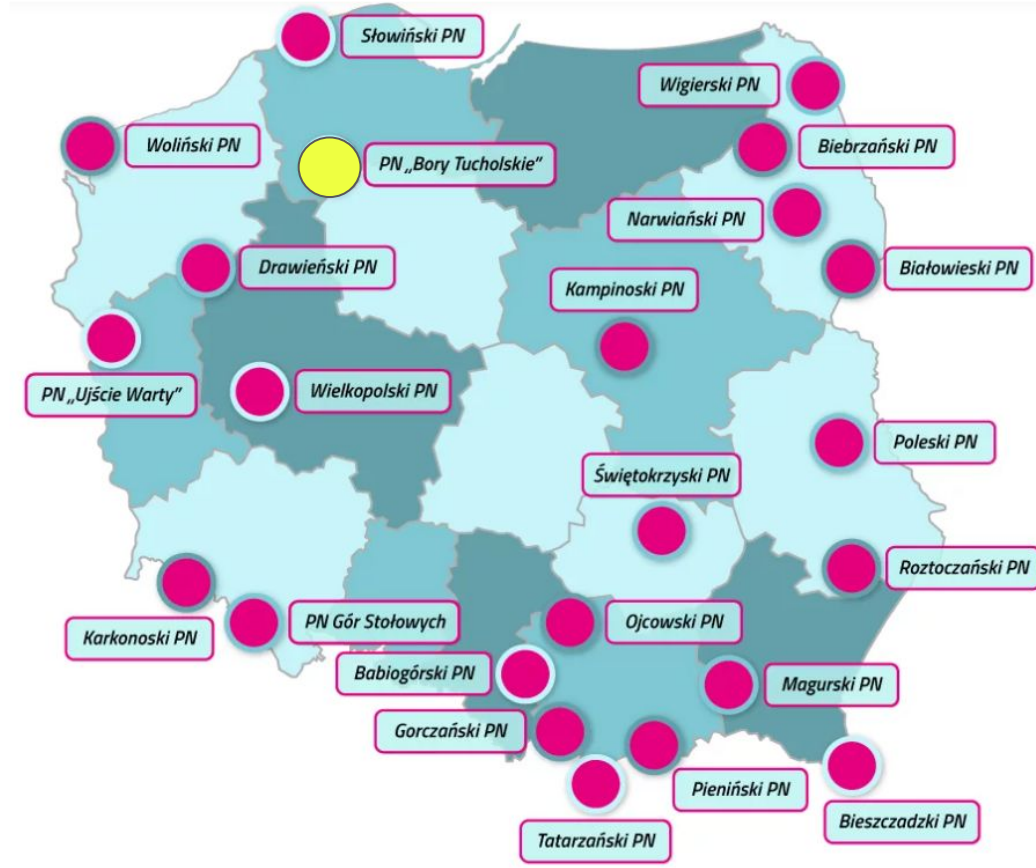
1. Called "Polish Switzerland", it is a fairy-tale land full of limestone inselbergs, caves, rock gates and valleys, the history of which is passed down by the next generation in the form of folk tales.
2. There are 500 caves in the park.
3. The symbol of the Ojcowski National Park is a bat.

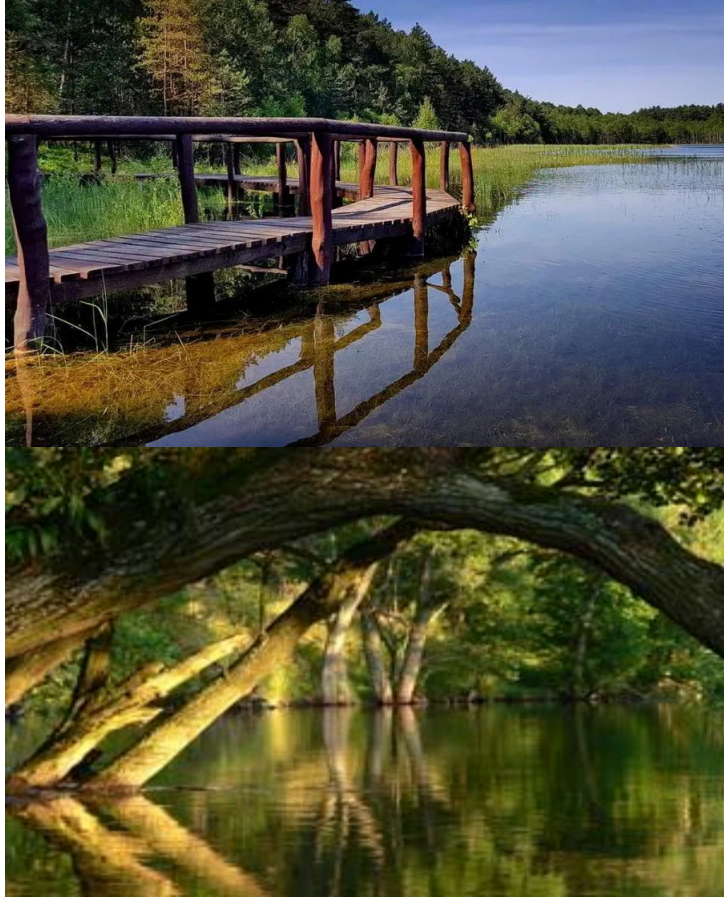




BORY TUCHOLSKIE NATIONAL PARK

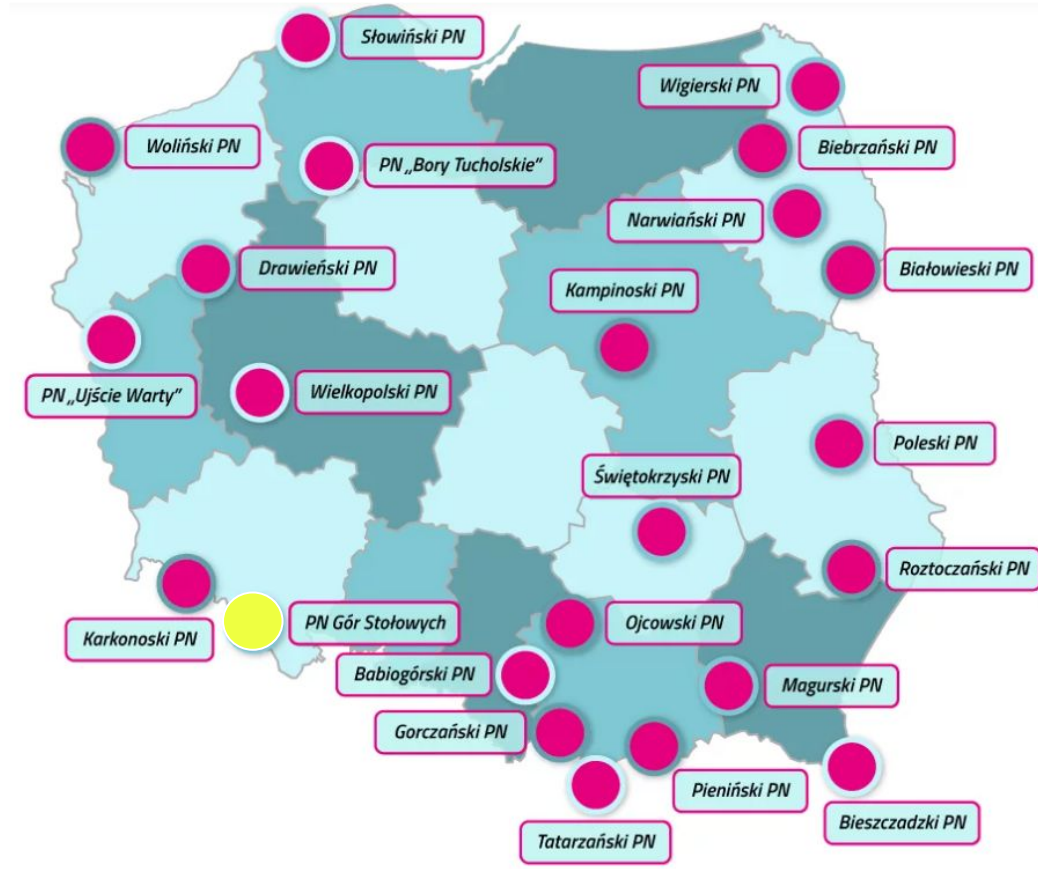
1. Bory Tucholskie National Park is one of the smallest national parks in Poland
2. There are as many as 21 lakes in the park
3. The Tucholskie Forests are home to many animal species, including wolves, deer, roe deer, beavers, white-tailed eagle, eagle owl, capercaillie and mute swan.





GÓRY STOŁOWE NATIONAL PARK

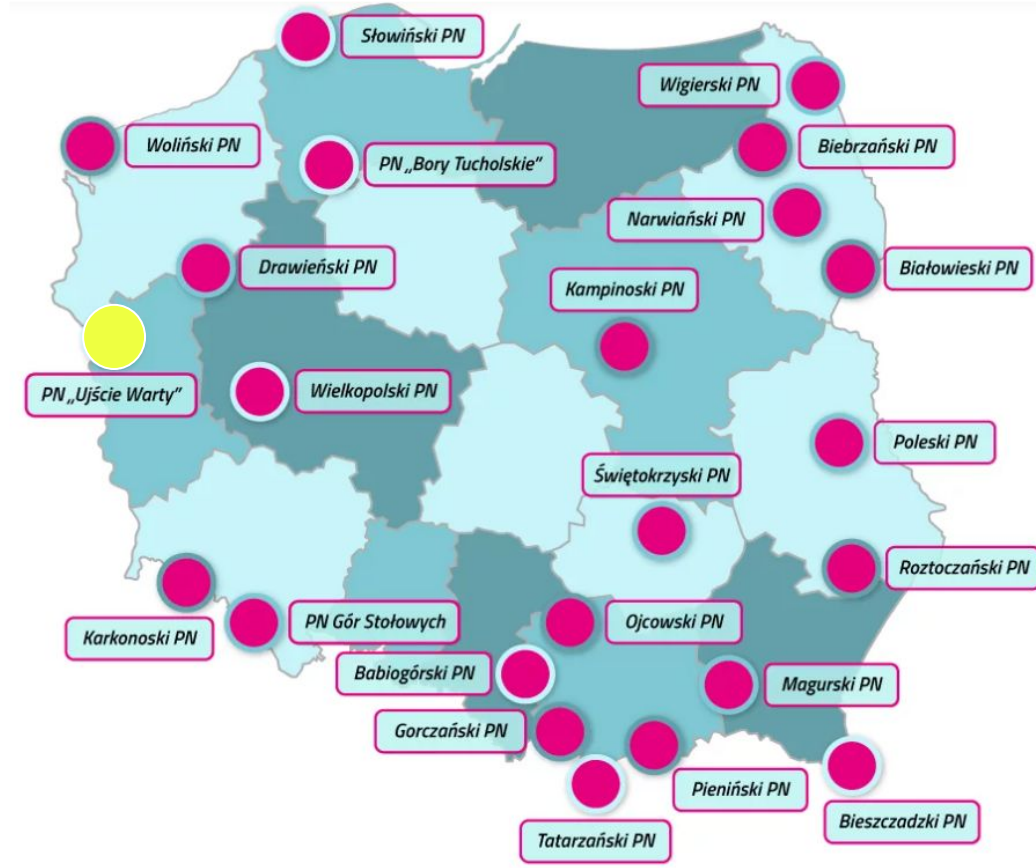
1. in 1965, a new mineral was discovered, called stolovite, which consists of a combination of beryllium, magnesium and aluminum.
2. In the northern part of the góry stołowe there are Rock Mushrooms - a group of original rocks.

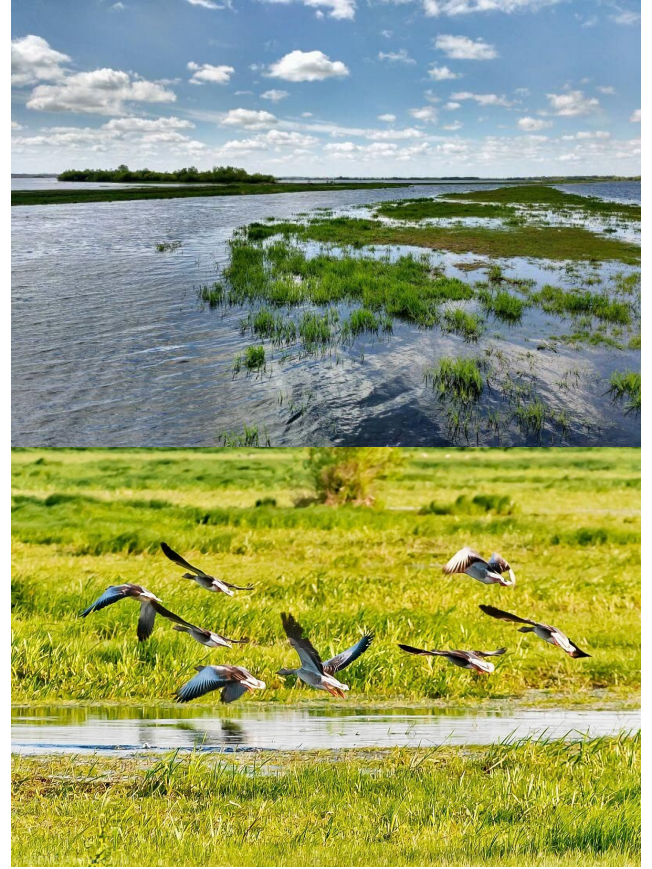




UJŚCIE WARTY NATIONAL PARK

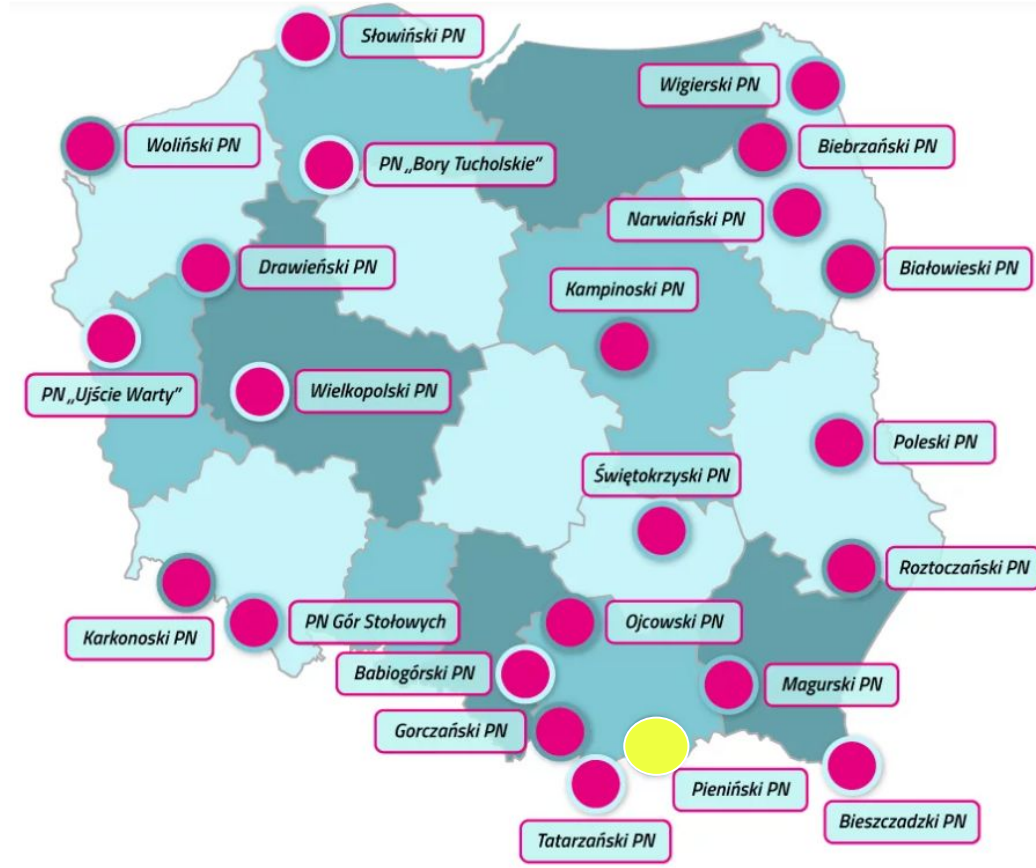
1. The area of the "Ujście Warty" National Park is one of the most important breeding areas for water and marsh birds in Poland
2. 245 species of birds and breeding sites of 160 species have been found here - these include: 4 species of grebes, 7-8 species of ducks, 5 species of caddis, 9-10 species of waders.





PIEŃSKI NATIONAL PARK

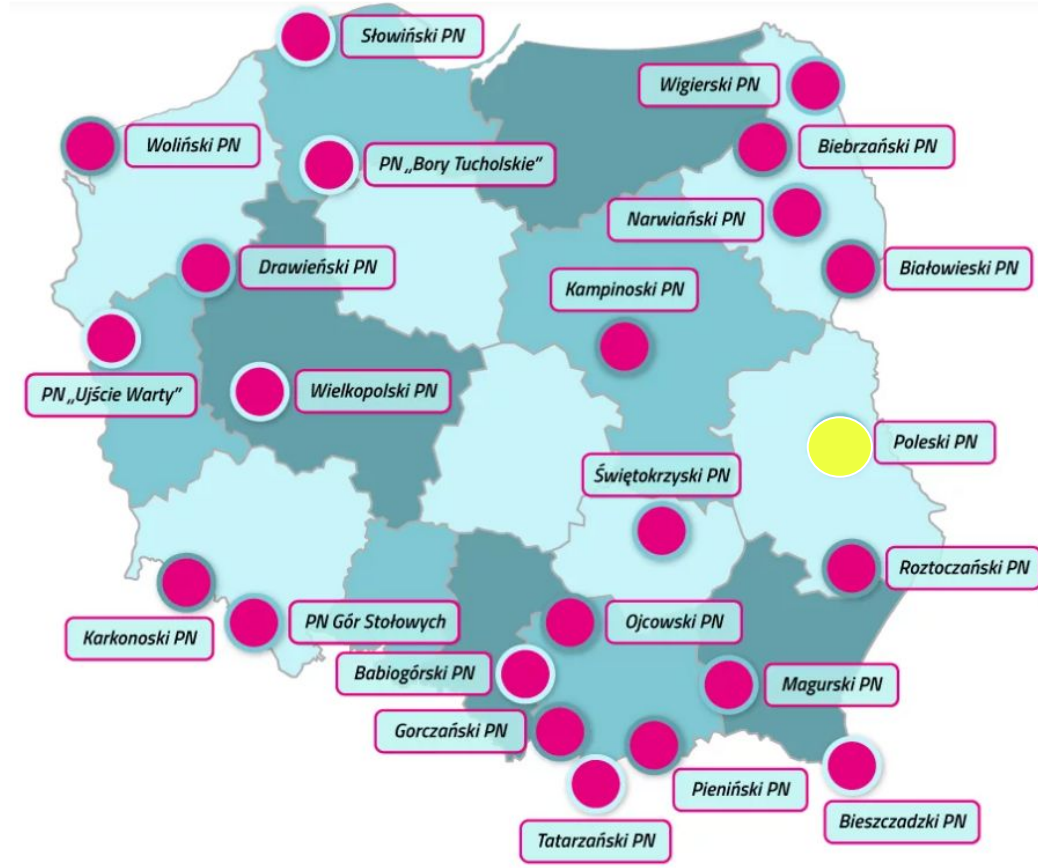
1. The Pieniny National Park is one of the smallest national parks in Poland, but also one of the most popular and most frequently visited.
2. The Pieniny National Park is the first and therefore the oldest of the 23 Polish national parks.

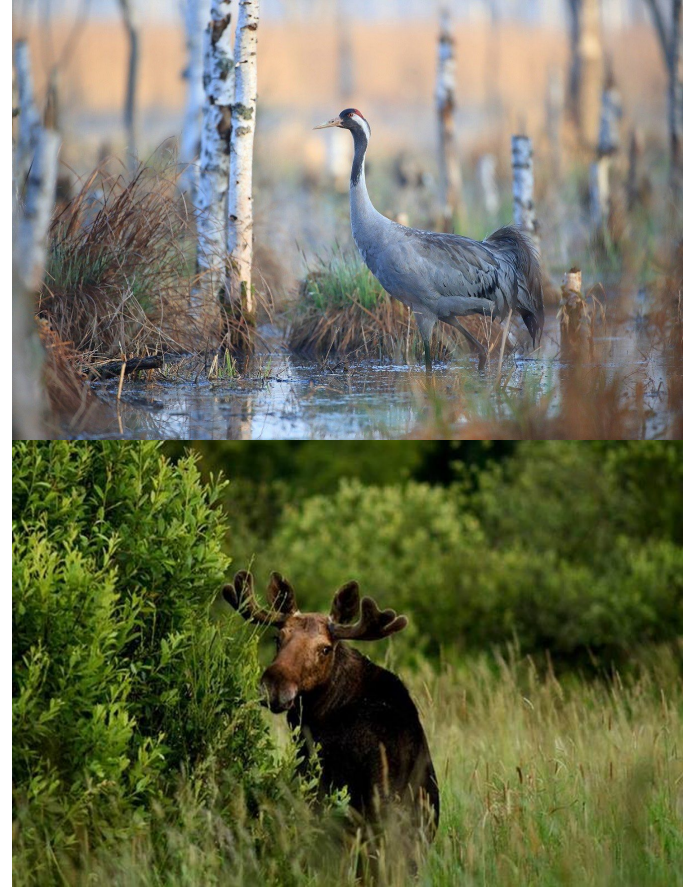




POLESKI NATIONAL PARK

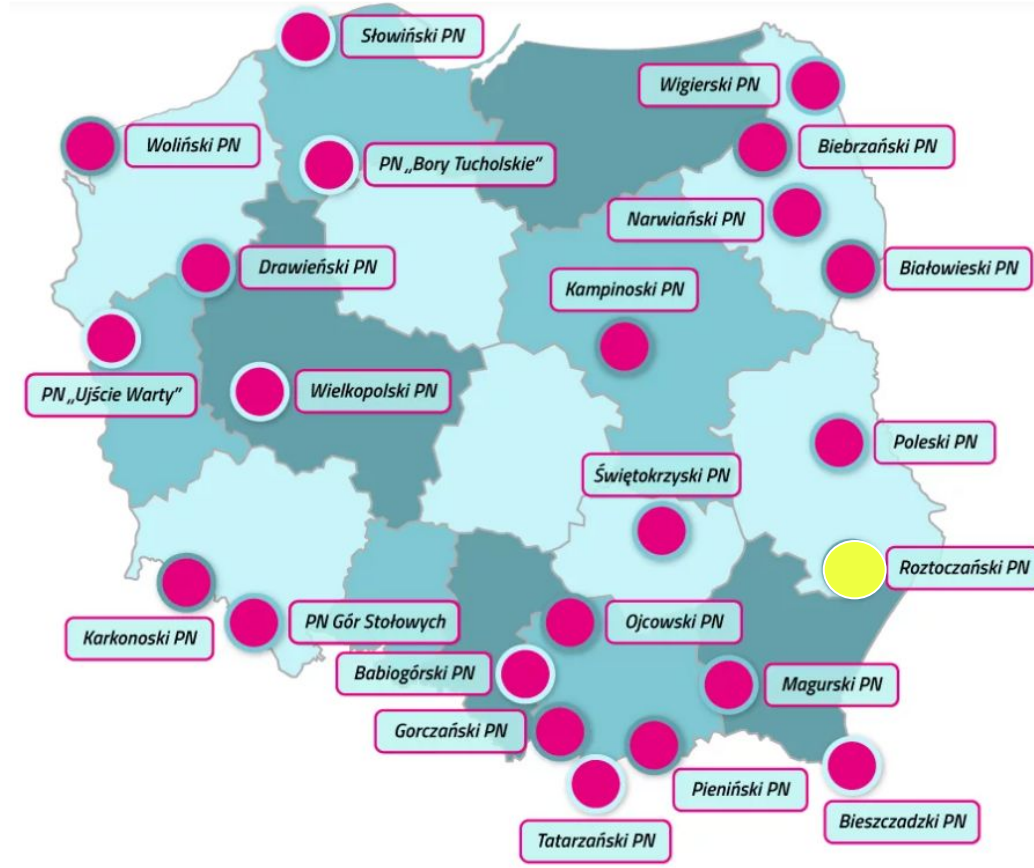
1. The symbol of the Polesie National Park is a crane.
2. The Poleski National Park is home to the largest number of fish ponds in Central Europe.
3. The park also hosts numerous cultural events, such as folklore festivals and classical music concerts.





ROZTOCZAŃSKI NATIONAL PARK

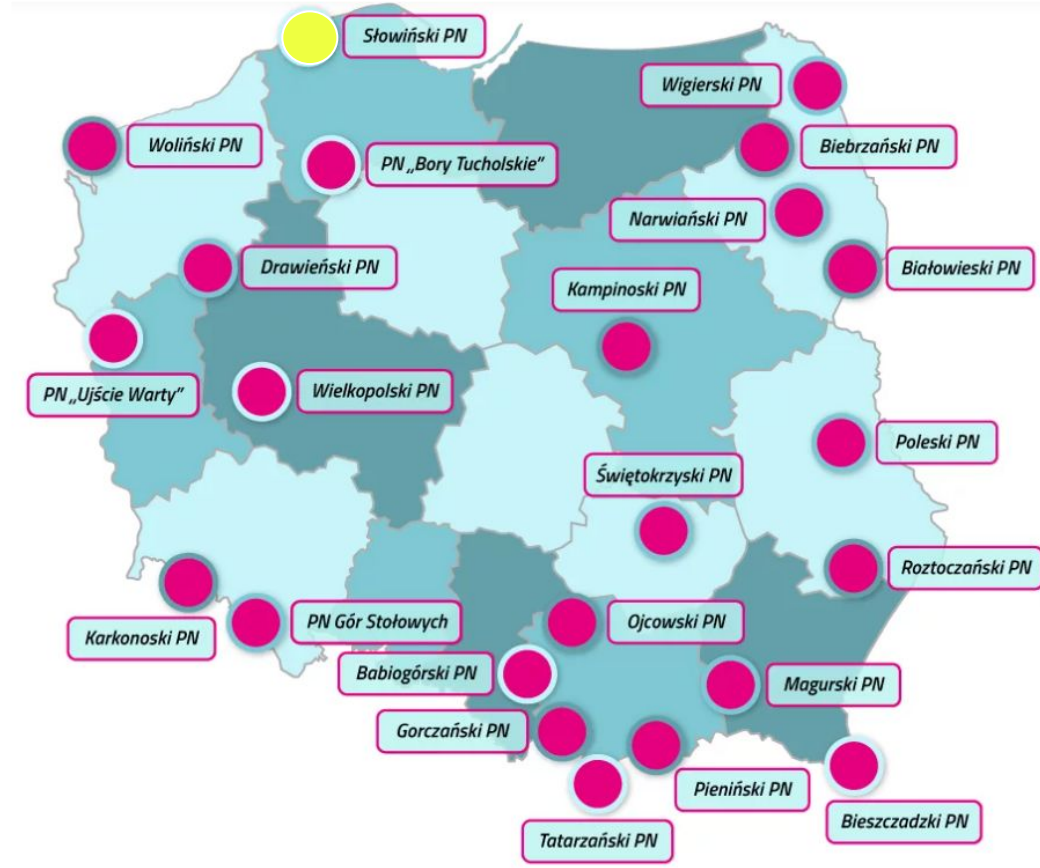
1. All typical forest animals live here. Among others, deer, roe deer, wild boars, wolves, foxes, badgers, martens, otters on the waters, as well as moose and lynxes from time to time.
2. Roztocze has been included on the elite UNESCO List of Biosphere Reserves.





SŁOWIŃSKI NATIONAL PARK

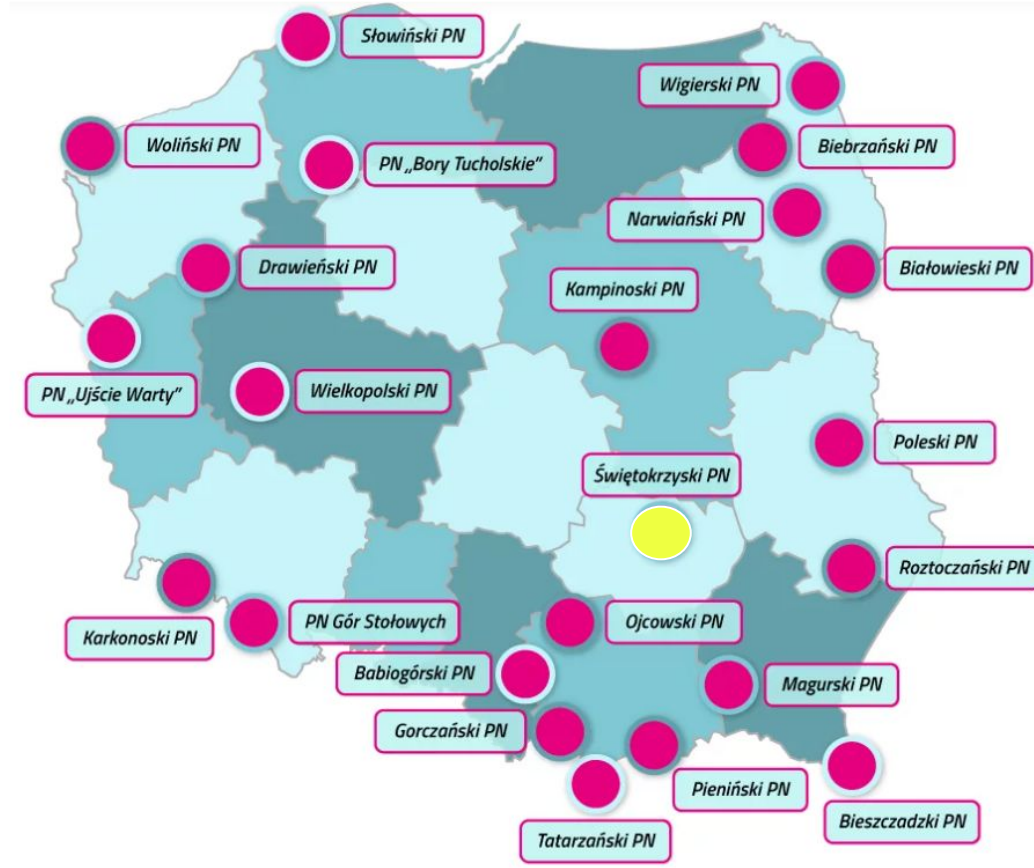
1. Its greatest peculiarity are the shifting dunes that occupy a large part of the park on the sea side.
2. the symbol of the Słowiński National Park is a seagull

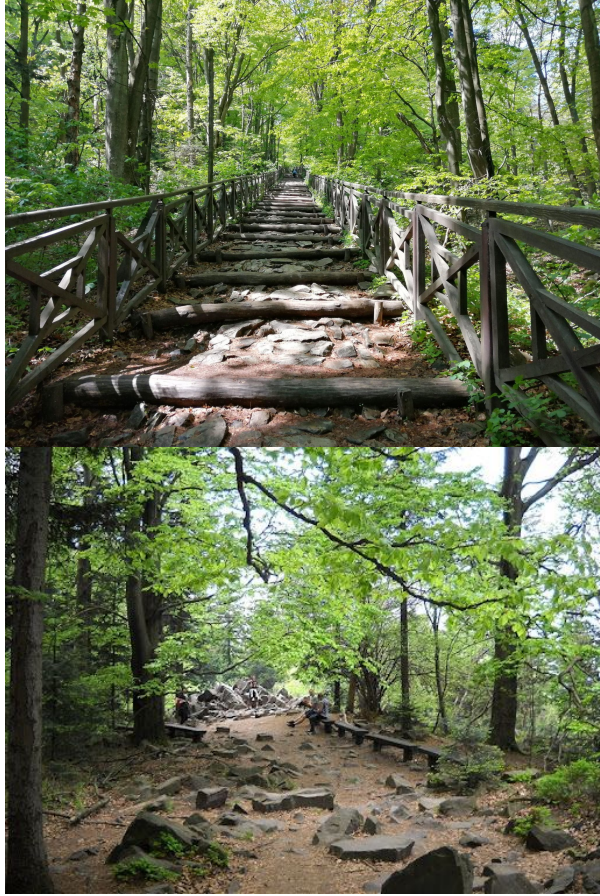




ŚWIĘTOKRZYSKI NATIONAL PARK

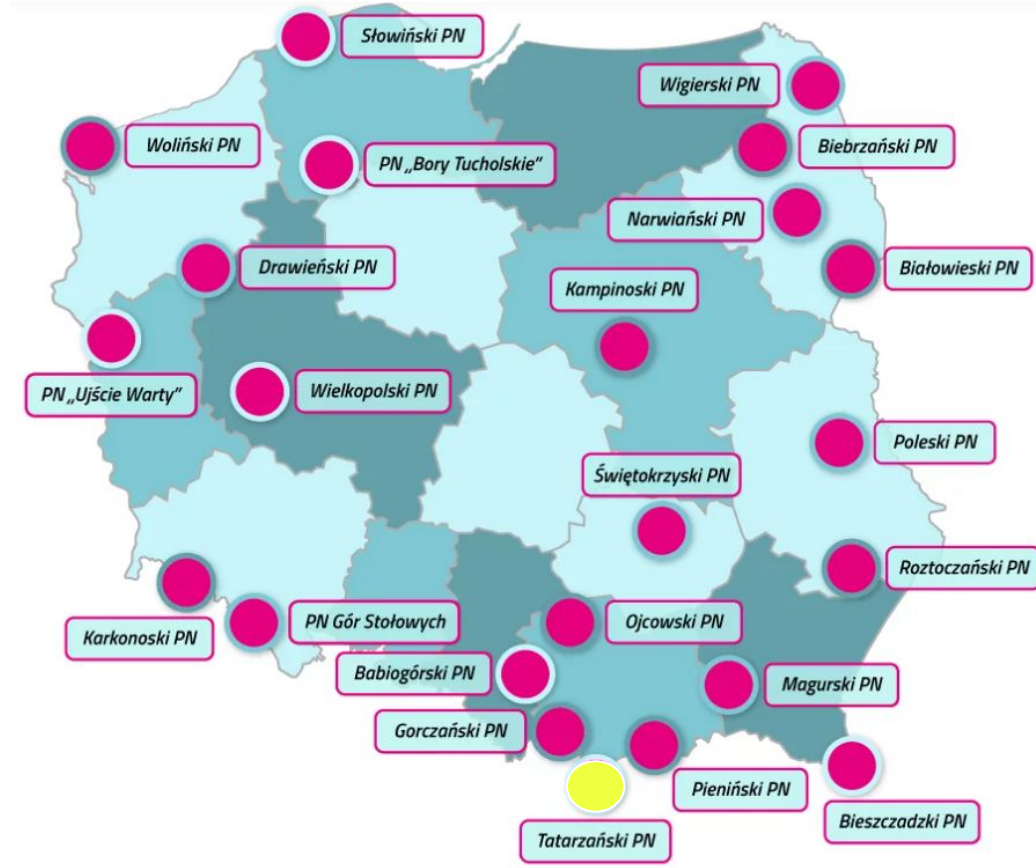
1. Forests dominate here (approx. 95%), including fir forests.
2. The symbol of the Park is a deer with a cross with two horizontal arms between its antlers.
3. we can observe natural biological succession here, a large amount of dead organic matter and greater biodiversity.

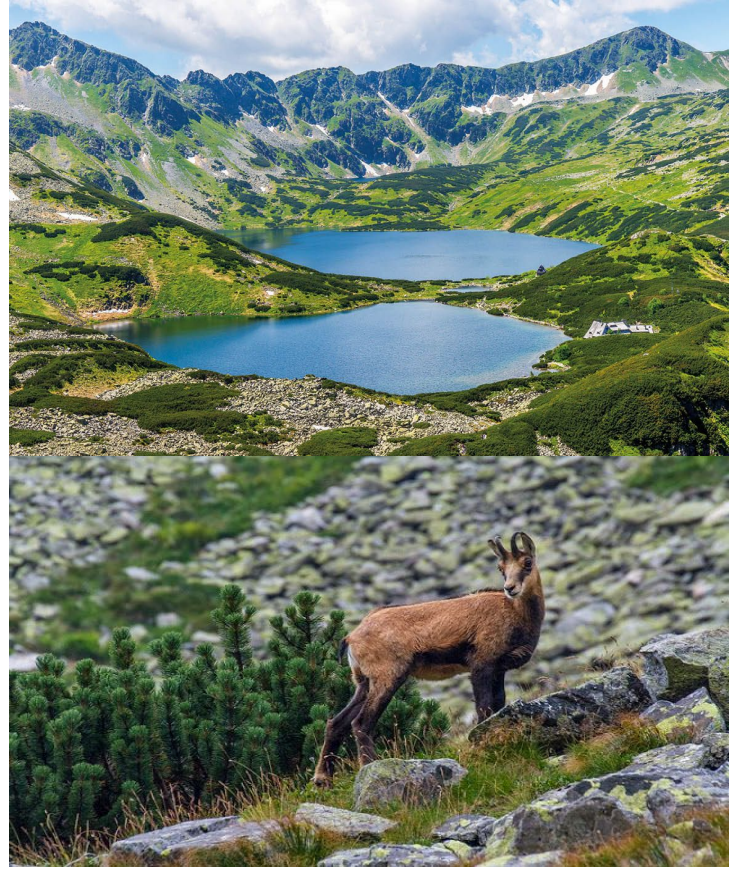
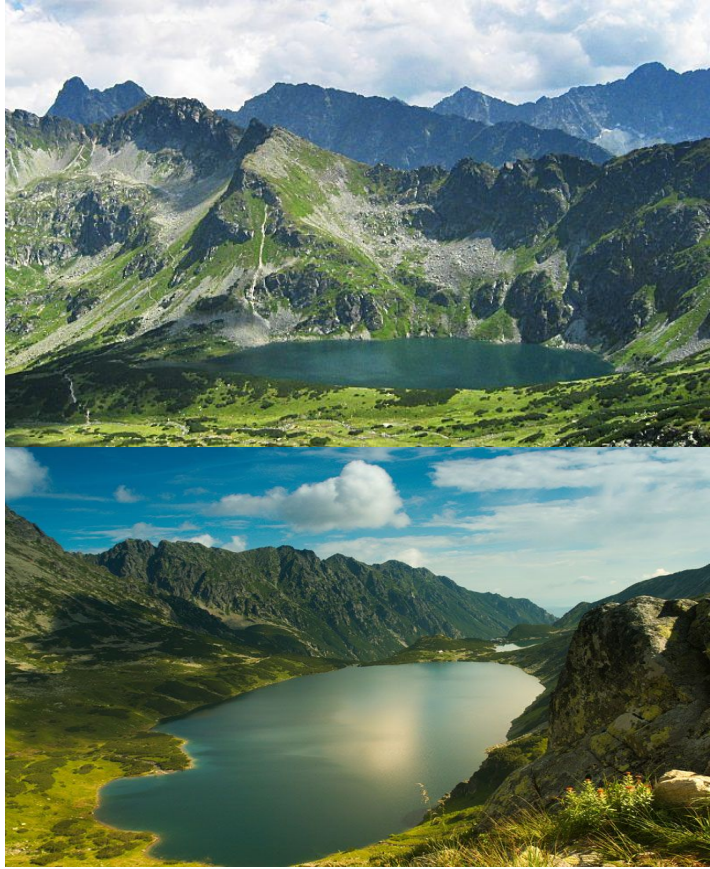




TATRZAŃSKI NATIONAL PARK

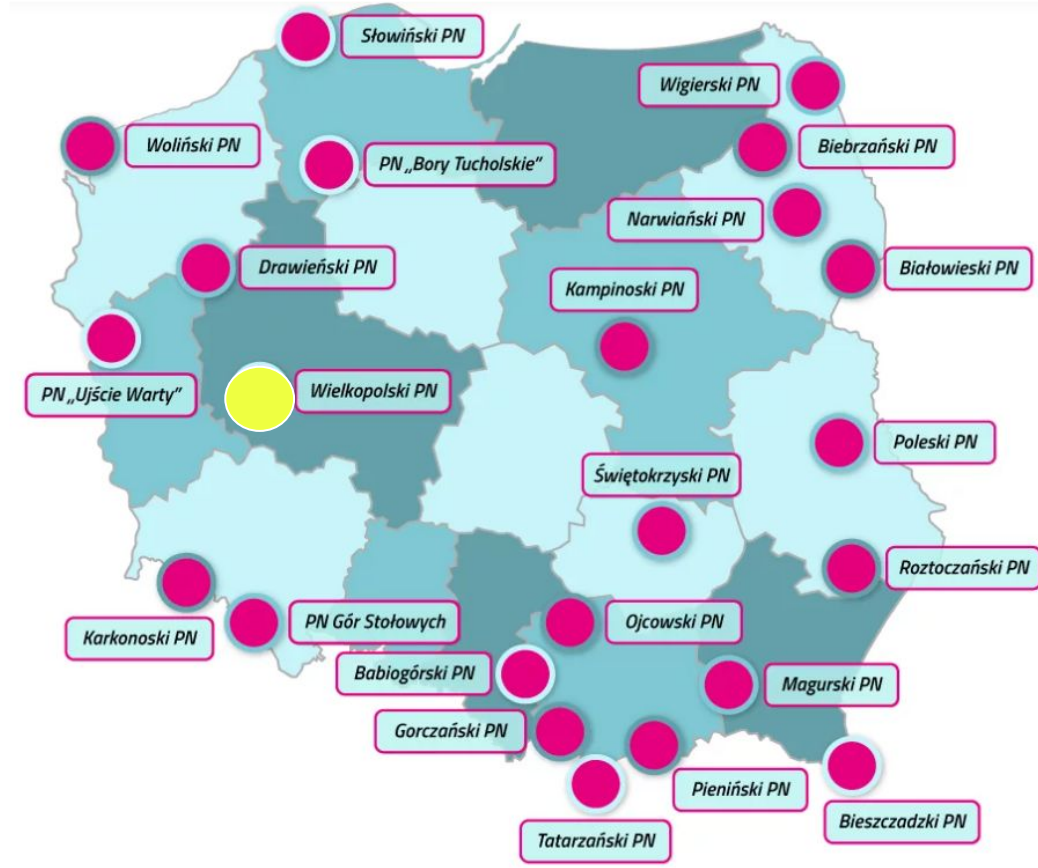
1. The chamois is a beautiful animal. It is a symbol of our highest mountains - the Tatra Mountains. It is included in the emblem of the Tatra National Park and TANAP
2. The park's faunal peculiarities include the chamois and the marmot, protected since the mid-19th century, as well as the brown bear and several species of birds, including the golden eagle, falcons, the wallcreeper and the mountain fowl.





WIELKOPOLSKI NATIONAL PARK

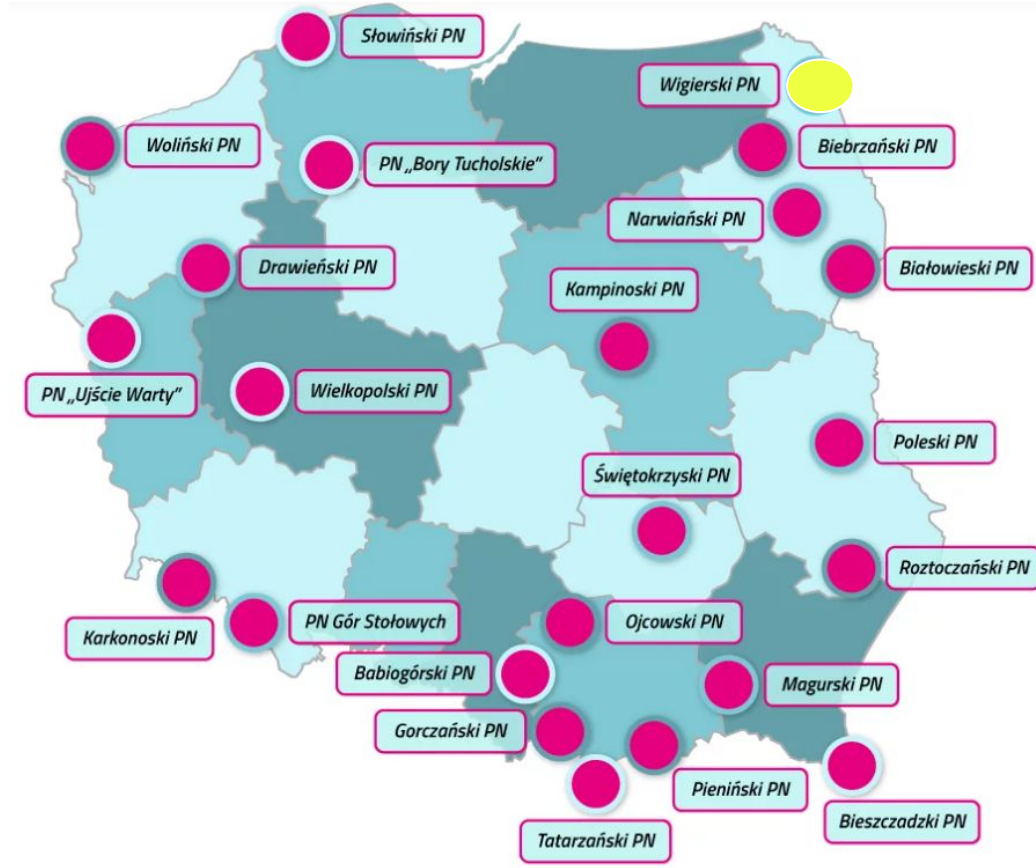
1. It is characterized by a picturesque landscape that was shaped during the last glaciation
2. The largest group are invertebrates, dominated by insects - over 3,000 species. The forests are full of beetles. They include protected species such as the stag beetle and the blackbuck.





WIGIERSKI NATIONAL PARK

1. A feature of the park is the extraordinary diversity of water ecosystems - 42 lakes, with the largest and deepest lake Wigry, as well as larger and smaller rivers.
2. The park's symbol is the European beaver, approximately 250 of which inhabit the shores of local lakes and rivers.





WOLIŃSKI NATIONAL PARK

1. The special advantages of the Park include: the most beautiful section of the Polish cliff coast, well-preserved beech forests, the unique island delta of Świna, and the coastal strip of the Baltic Sea.
2. Almost 230 species of animals live in the Wolin National Park. The most spectacular are white-tailed eagles and bison. However, you can also see sparrowhawks, cormorants, aquatic warblers, roe deer, wild boars, deer, raccoons, raccoon dogs and minks.

